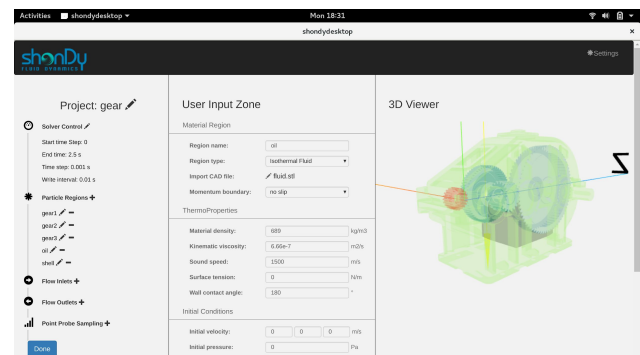
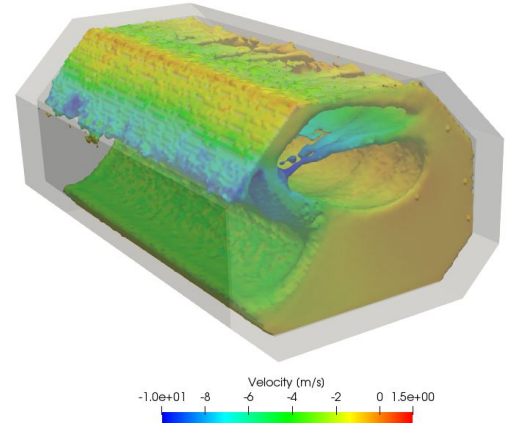
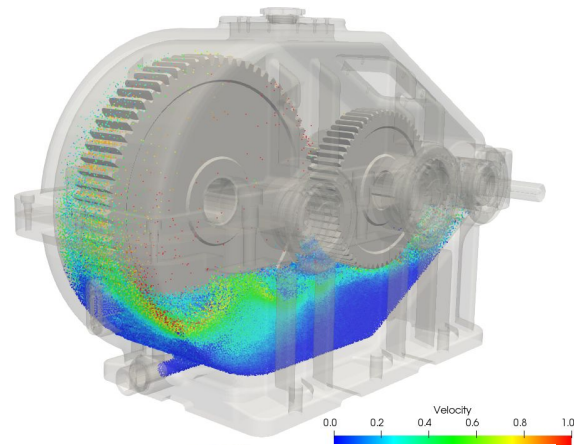


# shonDy | meshless fluid dynamics

Innovative fluid dynamic technology for engineering

**shonDy** is an innovative software solution for the computation of complex fluid dynamic problems. Without the restriction of a computational mesh, more design iterations are possible for the development and optimization of your products. These advantages pay off especially for fluid simulations involving moving bodies and free surface flows.



## shonDy Desktop

shonDy is available for Linux, Windows and Mac.



## shonCloud

Use shonCloud to manage and edit your projects in the cloud.



## shonDy HPC

Get shonDy on your in-house HPC installed to fully leverage its power and keep all your projects at your organization.



## Services

Support in German, English and Chinese. We also provide custom developments and integrations.